



# Fybroc® NM WSB Series

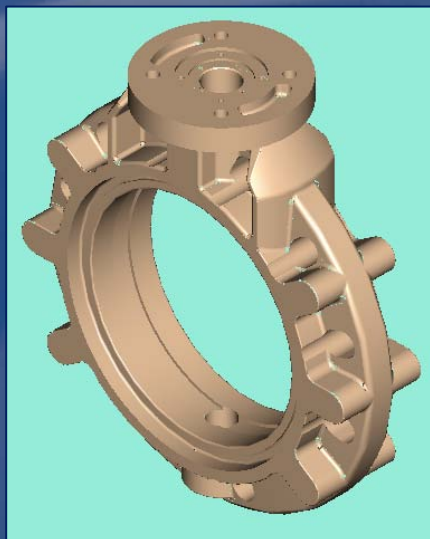
*All Non-Metallic Valves  
for Corrosive Applications*



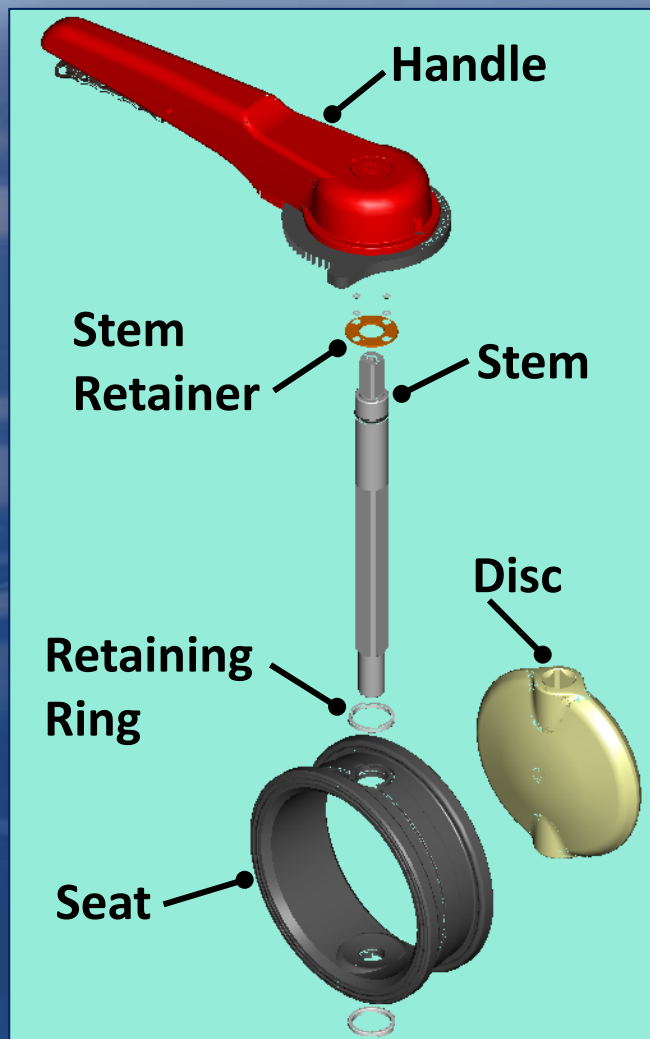
A Met-Pro Fluid Handling Technologies Business  
Combining the Resources of Dean Pump, Fybroc & Sethco

[www.mp-gps.com](http://www.mp-gps.com)





**Body**





These are the main components of the butterfly valve to provide sealing. Only the seat and disc are in the process media (wetted).

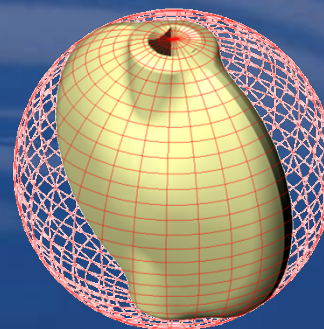
- **The Stem:** protected by the seat and disc
- **The Body:** protected by the seat and disc



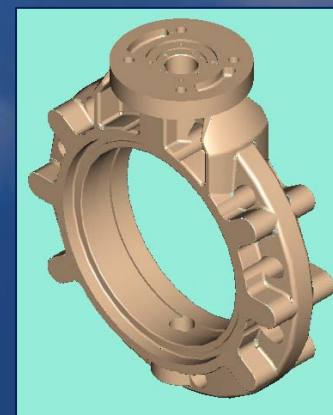
Stem



Seat with  
Retaining Rings



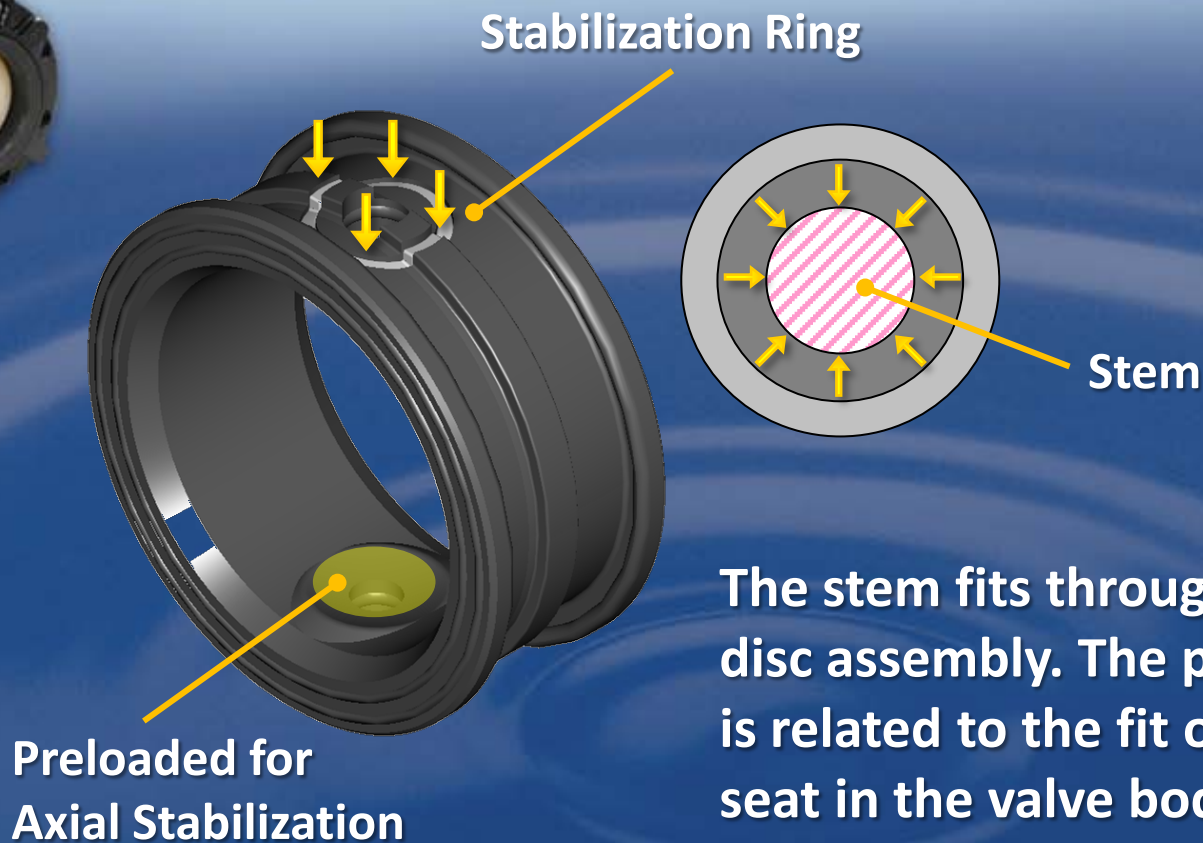
Disc



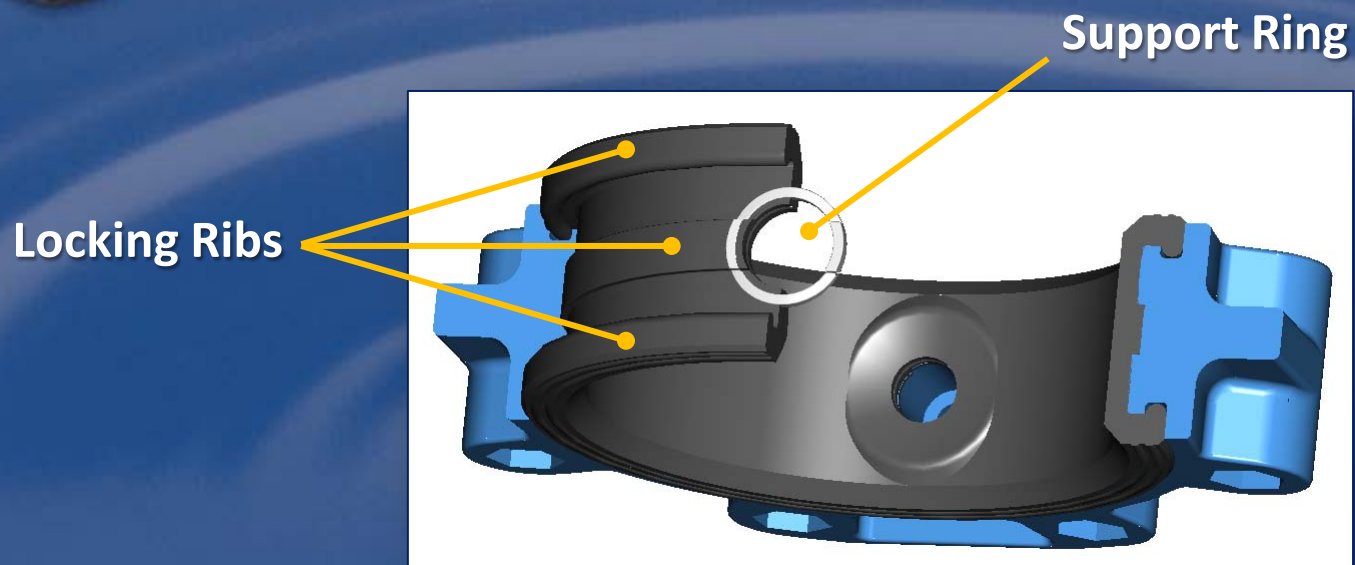
Body

**Note:** The O-ring on the stem is in the event of a seat failure and is not under any pressure in normal conditions.





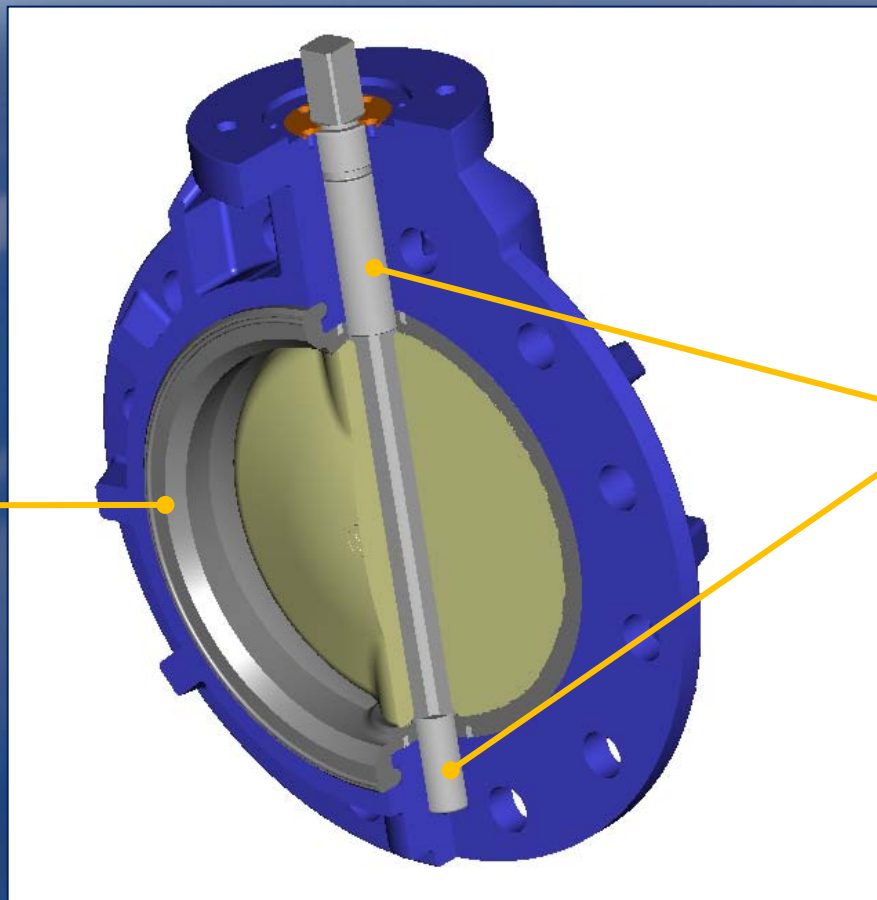
The stem fits through the body/seat/disc assembly. The preload on the disc is related to the fit of the disc and seat in the valve body. Retaining rings provide a preload of tension around the diameter of seat opening around the stem diameter.



## Fybroc® NM WSB Series Butterfly Valve Seat Design

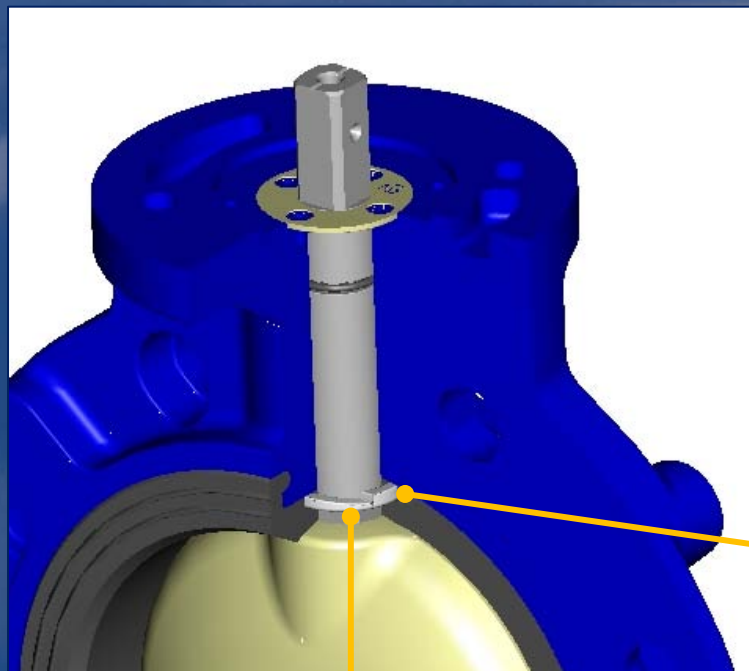


Seat



Retaining Rings

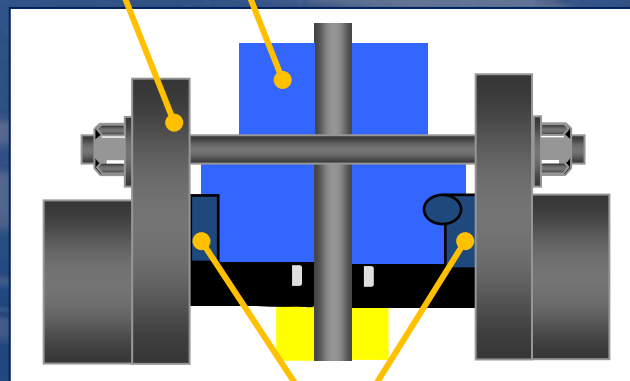




Seat Stem Sealing

Flange

Body



Retaining Ring